

# Journal of Antiques and Collectibles SHOW GUIDE

2022 MAY, JULY, & SEPTEMBER BRIMFIELD SHOWS

**EACH ISSUE DISTRIBUTED FOR TWO MONTHS  
LOCALLY, NATIONWIDE, ONLINE, & ON-SITE!**

**DESIGNED  
TO BE READ,  
USED, AND  
SAVED!**

## **2022 BRIMFIELD SHOW DATES**

**May 10-15**

**July 12-17**

**September 6-11**

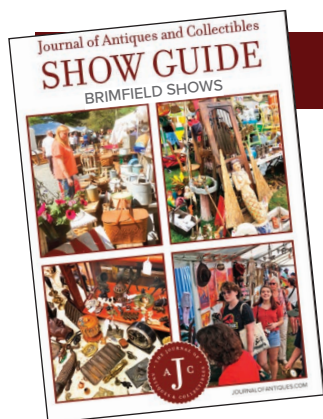
*For information &  
to place advertising contact*

**Maxine Carter-Lome**  
[journalofantiques@gmail.com](mailto:journalofantiques@gmail.com)

**Jeffrey Lome**  
[jeffrey@journalofantiques.com](mailto:jeffrey@journalofantiques.com)

**Judy Gonyeau**  
[editorial.journalofantiques@gmail.com](mailto:editorial.journalofantiques@gmail.com)

[www.JournalofAntiques.com](http://www.JournalofAntiques.com)  
508-347-1960 x 402 | 888-698-0734



## 2022 BRIMFIELD SHOW GUIDES MEDIA KIT

Promote your Brimfield show or booth, antique shop, local business, or upcoming antique show to the thousands of dealers and show-goers who attend the Brimfield Antique Shows. These buyers and sellers, antiquers and collectors turn to the free Journal of Antiques & Collectibles' Brimfield Guides for information on show schedules and field information, shops to visit, places to stay and dine locally and regionally, and upcoming shows and auctions of interest.

**2022 BRIMFIELD SHOW DATES**  
**May 10-15 • July 12-17 • September 6-11**

### THE BEST EXPOSURE FOR YOUR ADVERTISING DOLLARS

- **Nationally** – Inserted in the May, July, & September issues of the *Journal of Antiques & Collectibles*, and mailed to Shows & Shops around the country
- **Regionally & Locally** – Distributed at antique shops and business in and around the Brimfield region
- **At the Show** – Available at the Chamber of Commerce Information Booth, in the *Journal's* bright red "Take One" boxes along Route 20, and on most show fields
- **Online** – Readable PDF online at [www.JournalofAntiques.com](http://www.JournalofAntiques.com) with live links to advertiser websites

### Rates\*

Size	Dimensions	Single Issue Rate	3-Issue Discount
Full Page	6 <sup>3</sup> / <sub>8</sub> " x 9 <sup>1</sup> / <sub>2</sub> "	\$700	\$600
Half Page	6 <sup>3</sup> / <sub>8</sub> " x 4 <sup>5</sup> / <sub>8</sub> "	\$450	\$400
Quarter Page	6 <sup>3</sup> / <sub>8</sub> " x 2 <sup>1</sup> / <sub>4</sub> "	\$275	\$250
One-Eighth Page	3 <sup>1</sup> / <sub>8</sub> " x 2 <sup>1</sup> / <sub>4</sub> "	\$150	\$125

\* Full Color, All Glossy Pages

Inside Front Cover	6 <sup>3</sup> / <sub>8</sub> " x 9 <sup>1</sup> / <sub>2</sub> "	\$700	\$650
Inside Back Cover	6 <sup>3</sup> / <sub>8</sub> " x 9 <sup>1</sup> / <sub>2</sub> "	\$700	\$650
Back Cover	6 <sup>3</sup> / <sub>8</sub> " x 9 <sup>1</sup> / <sub>2</sub> "	\$750	\$700

Covers are sold on a first-come, first-served basis

### Deadlines

<b>May Guide</b>	March 25 (for April & May Distribution)
<b>July Guide</b>	June 1 (for June & July Distribution)
<b>September Guide</b>	July 29 (for August & September Distribution)